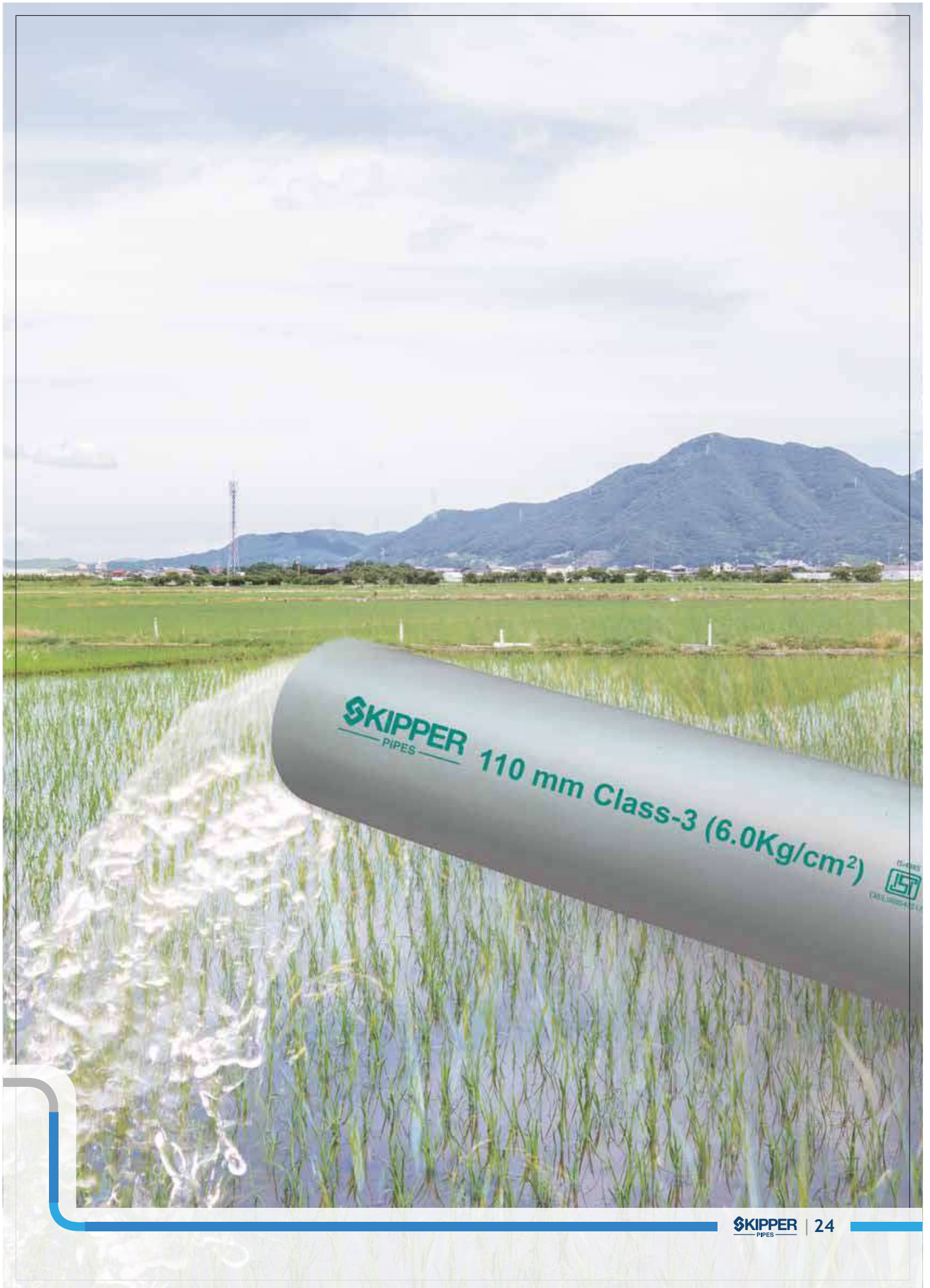


AGRI & BOREWELL

AGRICULTURE PIPES & FITTINGS
CASTING, RIBBED & SCREEN PIPES
COLUMN PIPES

Designed to
create a greener world





SKIPPER
PIPES

110 mm Class-3 (6.0Kg/cm²)



AGRICULTURE

Pipes & Fittings

Solution to Pressure and Non-Pressure Applications

AGRI PIPES AND FITTINGS

Solution to Pressure and Non-Pressure Applications

Skipper offers comprehensive range of UPVC Pipes & Fittings used in various applications like Irrigation & Water Supply in diverse pressure classes. Pipes are available in both ring & solvent joints and fittings are in moulded & fabricated form.



Product Range

PIPES	FITTINGS
20 mm to 315 mm	40 mm to 200 mm

Type A : for water supply

Type B : for use in Agriculture.

Installation Guide

Solvent Welding

Ring Fit threaded or Brass insert end jointings will be as per standard installation procedures & applications.



Standards

PIPES		
Size (mm)	Working Pressure(Kg/cm ²)	Standard
20 mm to 315 mm	2.5, 4, 6, 8 & 10	IS 4985 : 2021

FITTINGS		
Size (mm)	Working Pressure(Kg/cm ²)	Standard
40 mm to 200 mm	4, 6 & 10	IS 7834 : 1987
		IS 10124 : 2009

AGRI PIPES AND FITTINGS

Solution to Pressure and Non-Pressure Applications

Dimensions | as per IS 4985:2021

Nominal Outside Diameter	Mean Outside Diameter		Wall Thickness										Mean Socket Internal Diameter of Mid point of Socket Length		
			(Class -1)/ 2.5 kg/cm²		(Class -2)/ 4.00 kg/cm²		(Class -3)/ 6 kg/cm²		(Class -4)/ 8 kg/cm²		(Class -5)/ 10 kg/cm²				
	Min	Max	Min	Max	Min	Max	Min	Max	Min	Max	Min	Max	Min	Max	
(mm)	(mm)	(mm)	(mm)	(mm)	(mm)	(mm)	(mm)	(mm)	(mm)	(mm)	(mm)	(mm)	(mm)	(mm)	
20	20	20.3									1.1	1.5	20.1	20.3	
25	25	25								1.2	1.6	1.4	1.8	25.1	25.3
32	32	32.3								1.5	1.9	1.8	2.2	32.1	32.3
40	40	40.3					1.4	1.8	1.8	2.2	2.2	2.7	40.1	40.3	
50	50	50.3					1.7	2.1	2.3	2.8	2.8	3.3	50.1	50.3	
63	63	63.3			1.5	1.9	2.2	2.7	2.8	3.3	3.5	4.1	63.1	63.3	
75	75	75.3			1.8	2.2	2.6	3.1	3.4	4	4.2	4.9	75.1	75.3	
90	90	90.3	1.3	1.7	2.1	2.6	3.1	3.7	4	4.6	5	5.7	90.1	90.3	
110	110	110.4	1.6	2	2.5	3	3.7	4.3	4.9	5.6	6.1	7.1	110.1	110.4	
125	125	125.4	1.8	2.2	2.9	3.4	4.3	5	5.6	6.4	6.9	8	125.1	125.4	
140	140	140.5	2	2.4	3.2	3.8	4.8	5.5	6.3	7.3	7.7	8.9	140.2	140.5	
160	160	160.5	2.3	2.8	3.7	4.3	5.4	6.2	7.2	8.3	8.8	10.2	160.2	160.5	
180	180	180.6	2.6	3.1	4.2	4.9	6.1	7.1	8	9.2	9.9	11.4	180.2	180.5	
200	200	200.6	2.9	3.4	4.6	5.3	6.8	7.9	8.9	10.3	11	12.7	200.3	200.6	
225	225	225.7	3.3	3.9	5.2	6	7.6	8.8	10	11.5	12.4	14.3	225.3	225.7	
250	250	250.8	3.6	4.2	5.7	6.5	8.5	9.8	11.2	12.9	13.8	15.9	250.4	250.8	
280	280	280.9	4.1	4.8	6.4	7.4	9.5	11	12.5	14.4	15.4	17.8	280.4	280.9	
315	315	316	4.6	5.3	7.2	8.3	10.7	12.4	14	16.1	17.3	19.9	315.4	316	

Features & Benefits



Anti Corrosion



Superior Mechanical Strength



Excellent Chemical Resistance



Superior from a Hygiene Perspective



Relatively Low Cost



Maintenance Free

Applications

- Irrigation
- Drinking Water Supply
- Agriculture Water Distribution
- Cable Ducting



CASING & SCREEN PIPES

Solution to Borewell & Tubewell Application

CASING & SCREEN PIPES

Solution to Borewell & Tubewell Application

Skipper offers comprehensive range of Casing & Ribbed Screen Pipes that are manufactured using a high quality UPVC compound & are ideal for the transportation of hard, salty, sandy or chemically aggressive water. These pipes are also anti-corrosive having high tensile strength to withstand high impact and minimum water friction.

Casing Pipes are classified into those suitable for shallow, medium and deep depth wells as under:

- a) CS Pipe:** Shallow well casing pipes suitable for wells with depths upto 80 m.
- b) CM Pipe:** Medium well casing pipes suitable for wells with depths above 80 m and upto 250 m.
- c) CD Pipe:** Deep well casing pipes suitable for wells with depths above 250 m and upto 450 m.

IS:2818-2010



CMLNO-5478482

Product Range

SLOTTED & RIBBED CASING PIPES		
Ribbed Strainer Pipes	Slotted Pipes-CM	Slotted Pipes-CS
40 to 250mm (1½" to 10")	80 to 200mm (3" to 8")	150 to 175 mm (6" to 7")
PLAIN CASING PIPES		
Casing Shallow	Casing Medium	Casing Deep
150 to 300mm (6" to 12")	40 to 300mm (1½" to 12")	100 to 300 mm (4" to 12")

Standard

PIPE	TYPE	SIZE (mm)	STANDARD	JOINTS
Ribbed & Slotted Pipes	Ribbed Medium Strainer	40 to 300mm (1½" to 12")	IS 12818:2010	Threaded Joint
	Ribbed Deep Strainer	100 to 250mm (4" to 10")		
Casing Pipes	Casing Medium	40 to 250mm (1½" to 10")		
	Casing Shallow	150 to 250mm (6" to 10")		
	Casing Deep	175 to 250mm (7" to 10")		
Slotted Pipes	Slotted - CM	80 to 200mm (3" to 8")	As per manufacturing standard	
	Slotted - CS	150 to 175mm (6" to 7")		

Note: Boring Pipes are also available as per ASTM D 1785 Standard.

Features & Benefits



Easy to Handle



Corrosion Free



Ultimate Tensile Strength and Impact Strength



Maximum Yield of Water



Easy Joining & Installation



Non-Toxic



Non-Conductive



Long Life

CASING & SCREEN PIPES

Solution to Borewell & Tubewell Application



Dimensions

RIBBED SCREEN PIPES

Nominal Diameter(DN)		Mean Outer Diameter of Pipe (mm)		Medium Well Screen (RMS)			Deep Well Screen (RDS)		
				Mean Outer Diameter over Connection	Wall Thickness (under ribs) (mm)		Mean Outer Diameter over Connection	Wall Thickness (under ribs) (mm)	
Inches	mm	Min	Max	Max	Min	Max	Max	Min	Max
1½	40	52.00	52.20	56.00	3.50	4.00			
2	50	64.00	64.20	69.00	4.00	4.60			
3	80	92.00	92.30	98.00	4.00	4.60			
4	100	117.00	117.30	124.00	5.00	5.70	129.00	7.00	7.90
4½	115	129.00	129.30	136.00	5.00	5.70	141.00	7.50	8.50
5	125	144.00	144.40	154.00	6.50	7.30	156.00	8.00	9.00
6	150	169.00	169.40	182.00	7.50	8.50	184.00	9.50	10.70
7	175	204.00	204.50	219.00	8.80	9.80	221.00	11.80	13.60
8	200	229.00	229.50	247.00	10.00	11.20	251.00	13.00	14.80
10	250	284.00	284.50	302.00	12.50	14.00	309.00	16.00	17.60
12	300	334.00	334.60	356.00	14.50	16.20			

PLAIN CASING PIPES

Nominal Diameter(DN)		Mean Outer Diameter of Pipe (mm)		Deep Well Casing (CD)			Medium Well Casing (CM)			Shallow Well Casing (CS)		
				Mean Outer Diameter over Connection	Wall Thickness (mm)		Mean Outer Diameter over Connection	Wall Thickness (mm)		Mean Outer Diameter over Connection	Wall Thickness (mm)	
Inches	mm	Min	Max	Max	Min	Max	Max	Min	Max	Max	Min	Max
1½	40	48.00	48.20				52	3.50	4.00			
2	50	60.00	60.20				65	4.00	4.60			
3	80	88.00	88.30				94	4.00	4.60			
4	100	113.00	113.30				120	5.00	5.70			
5	125	140.00	140.40				150	6.50	7.30			
6	150	165.00	165.40				178	7.50	8.50	174	5.70	6.50
7	175	200.00	200.50	217	11.80	13.60	215	8.80	9.80	211	7.00	7.80
8	200	225.00	225.50	247	13.00	14.80	243	10.00	11.20	238	7.60	8.80
10	250	280.00	280.50	304	16.00	17.60	298	12.50	14.00	292	9.60	11.00
12	300	330.00	330.60	359	19.00	21.00	352	14.50	16.20	346	11.20	13.30



Applications

Borewell & Tubewell application



COLUMN PIPES

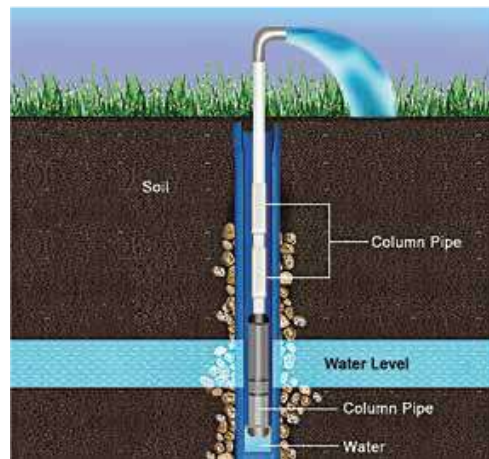
For Borewell Application



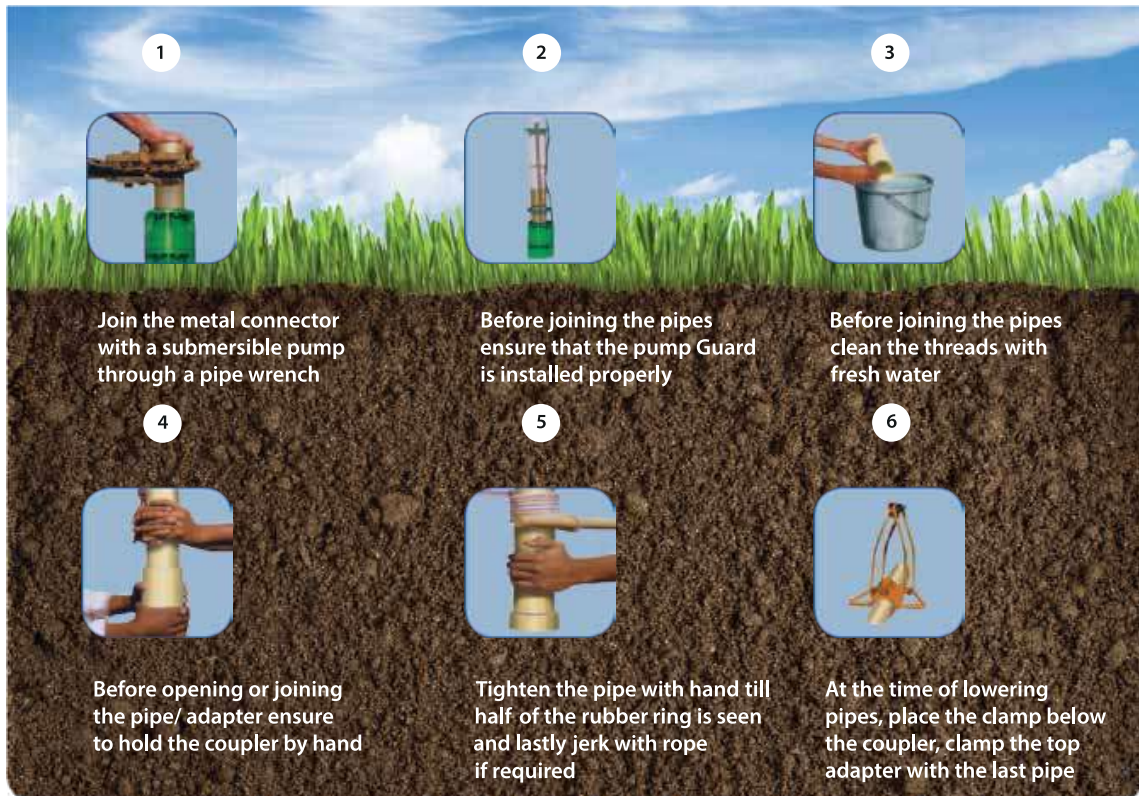
Skipper offers comprehensive range of Column Pipes fitted with submersible pumps with different heads upto 360 mtrs. Use of Special Compound, Square Threads for Joints & Sealing Rings make these pipes watertight, shock absorbent & provides good load strengths.

Product Range

Column Pipes are available from 25mm to 100mm in V4, Special, Silver, Gold & Diamond variants with option of Bell ended & Socket.



Installation Guide



COLUMN PIPES

For Borewell Applications

Dimensions

Column Pipes for Submersible Pumps						
SL NO	Size	Product Class	M.O.D		Pressure Ratings kg /cm2	Total Head in Mtr
			Min	Max		
1	25MM	V4	33.27	33.53	10	100
2	32MM	V4	42.03	42.29	10	100
3	40MM	V4	48.11	48.41	10	100
4	50MM	V4	60.00	60.20	10	100
5	65MM	V4	75	75.3	10	100
6	80MM	V4	88	88.3	10	100
7	25 MM	S-12.5	33.27	33.53	12.5	125
8	32MM	S-12.5	42.03	42.29	12.5	125
9	25 MM	S-15	33.27	33.53	15	150
10	32MM	S-15	42.03	42.29	15	150
11	25MM	SILVER	33.27	33.53	21	210
12	32MM	SILVER	42.03	42.29	21	210
13	40MM	SILVER	48.11	48.41	19	190
14	25MM	GOLD	33.27	33.53	29	290
15	32MM	GOLD	42.03	42.29	25	250
16	40MM	GOLD	48.11	48.41	23	230
17	50MM	GOLD	60	60.2	19	190
18	65MM	GOLD	75	75.3	18	180
19	80MM	GOLD	88	88.3	17	170
20	100MM	GOLD	113	113.3	16	160
21	32MM	DIAMOND	42.03	42.29	36	360

Features & Benefits



Long Life



Light Weight



Leak Proof Joints



High Tensile Strength



Quick Installation



Excellent Chemical & Corrosion Resistance



Applications

Borewell application fitted with submersible pumps.

